

TREX® HIDEAWAY® DECK PLUG FOR TREX TRANSCEND®, TREX SELECT® AND TREX SIGNATURE® DECKING

Installation Instructions



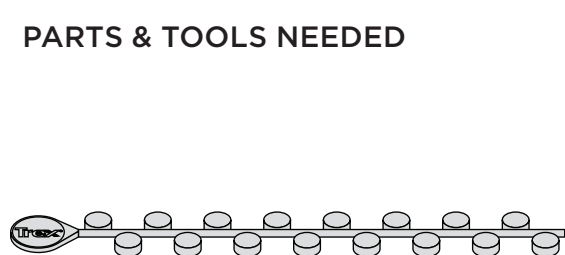
IMPORTANT NOTES:

- » *DO NOT use for Trex Enhance Decking (or any scalloped profile).*
- » *DO NOT use to install fascia.*
- » *Not recommended for use in salt environments.*
- » *Not for use with sleeper systems.*
- » *Trex Hideaway® plug systems are only compatible with Trex Plugs.*
- » *Always follow deck board manufacturer's installation guidelines.*

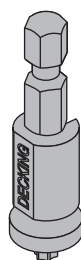
General Installation Recommendations:

- Always use two screws per joist or stair stringer.
- At board ends on the deck's edge, install screws placed perpendicularly at the recommended distance, at minimum of 1" from the board end and edge, without splitting the board.

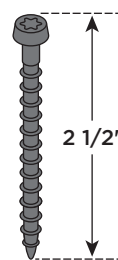
PARTS & TOOLS NEEDED



Trex Transcend® or Trex Select®
Color Match Deck Plugs



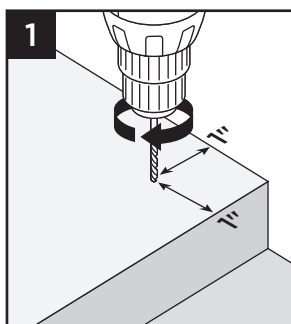
HEXSTIX® Depth Setter
(Select/Transcend/Signature
Decking)



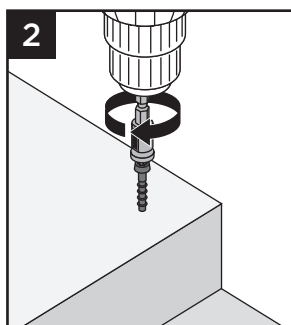
Trex Hideaway®
Composite Screw

Installation Instructions:

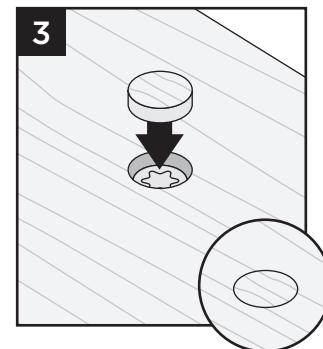
- For best results pre-drill through deck board only, using 1/8" drill bit. When installing close to the end of the board pre-drilling is required.



- For best results using an 18V or higher cordless drill and the included HEXSTIX® depth setter, install fasteners at a 90° angle (perpendicular to the board). Drive the screws into the decking until the bit releases from the screw.



- Clean out hole of any remaining debris and using a Trex Transcend or Trex Select color matched plug (sold separately), align the grain and press plug into the hole, and tap flush with a smooth faced hammer.



NOTE: Drive the screw in all at once, do not stop. You will hear the sound change when the screw is fully driven.